



成都亿佰特电子科技有限公司
Chengdu Ebyte Electronic Technology Co.,Ltd.

E30-433TBL-01 Datasheet v1.0

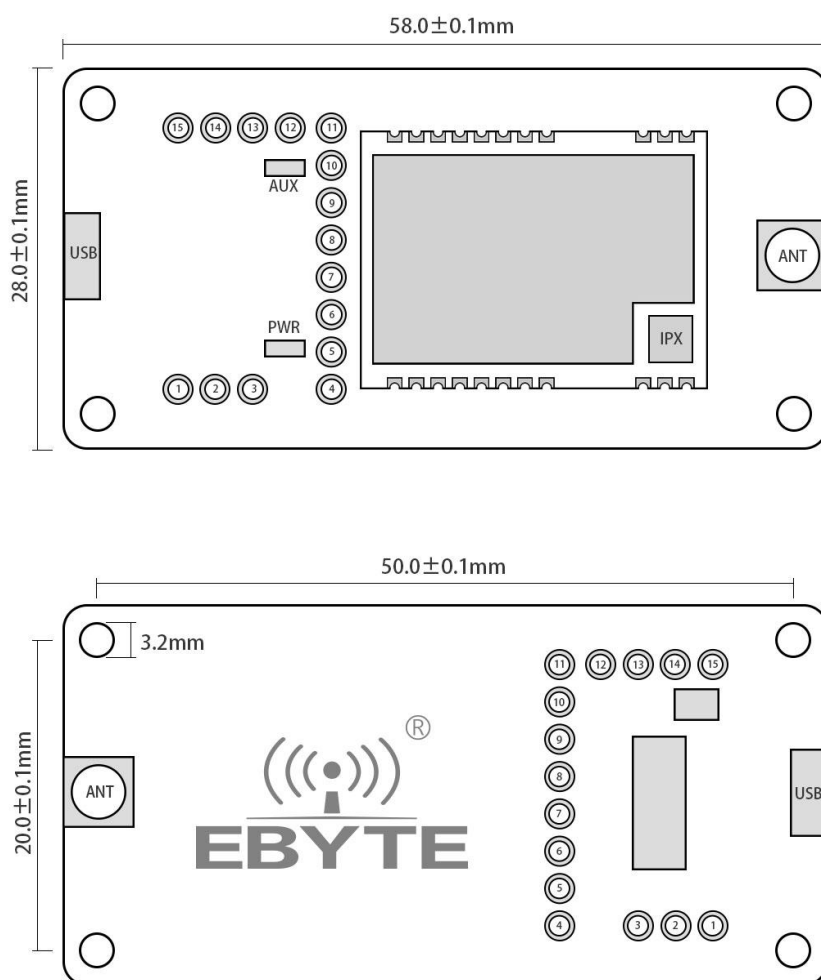


1.Introduction

E30-433TBL-01 is a set of test kits formed by serial SMD serial port module combined with USB to TTL serial port for customers testing and development, which greatly reduces the difficulty of testing and development.

About more details, please refer to manual of module [E30-433T20S3](#).

1.1. Size and Pin Definition



No	Value	Function
1	5V	Jumper short connected with VCC for power input
2	VCC	Power input
3	3.3V	Jumper short connected with VCC for power input

4	GND	Ground
5	VCC	Power input
6	NC1	/
7	NC2	/
8	NC3	/
9	RXD	RXD , to connect TXD of module for test
10	TXD	TXD , to connect RXD of module for test
11	AUX	Check more from manual of E30 module
12	M1	Pin M1 for mode selection, suspending means "1", when short connected with GND.it is "0"
13	GND	Ground. often work with M1
14	M0	Pin M0 for mode selection, suspending means "1", when short connected with GND.it is "0"
15	GND	Ground. often work with M0

2.Quick Start

1.2. Test preparation

2.11 Install driver

Download driver program CH341SER EXE from Ebyte website , double click to install.The driver program supports 32/64 bit Windows

10/8.1/8/7/VISTA/XP,SERVER2016/2012/2008/2003,2000/ME/98, with software digital signature authentication, good for USB to 3-wire and 9-wire serial port connection.

2.12 Connect to hardware

Prepare Micro USB cable, antenna, connect them to test board E30-433TBL-01, open corresponding serial port.

2.13 Communication in Mode 0



As shown above connect to jumpers(5V power supply, mode 0), both E30-433TBL-0 are configured this way, open serial port, for data TX and RX, and AUX indicator is blinking.



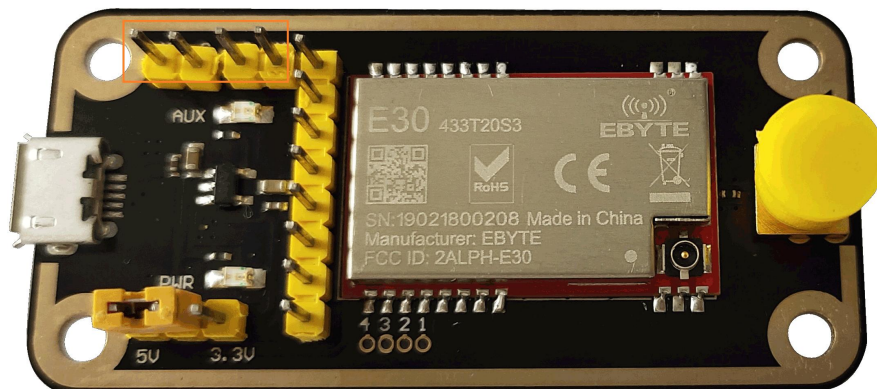
1.3. Other mode



As shown above, connect to jumpers (5V power supply, mode 1) see function details from E30 UART module manual.



As shown above connect to jumpers (5V power supply mode 2), see function details from E30 UART module manual.



As shown above, connect to jumpers (5V power supply mode 3), see function details from E30 UART module manual.

About us

Technical support: support@cdebyte.com

Documents and RF Setting download link: <https://www.cdebyte.com>

Thank you for using Ebyte products! Please contact us with any questions or suggestions: info@cdebyte.com

Fax: 028-64146160

Web: <https://www.cdebyte.com>

Address: B5 Mould Industrial Park, 199# Xiqu Ave, High tech Zone, Chengdu, Sichuan, China

